

DENIS KOVAL

BERLIN

Denis Images are executed with precision and calculation yet leaving much space for exploration and experiment.



COMMERCIAL CLIENTS INCLUDE

ADIDAS, PERNOD RICARD,
KLM, FILLING PIECES,
DE BIJENKORF, ZALANDO,
HIGHSNOBIETY, BREUNINGER,
MYTHERESA

EDITORIAL CLIENTS INCLUDE

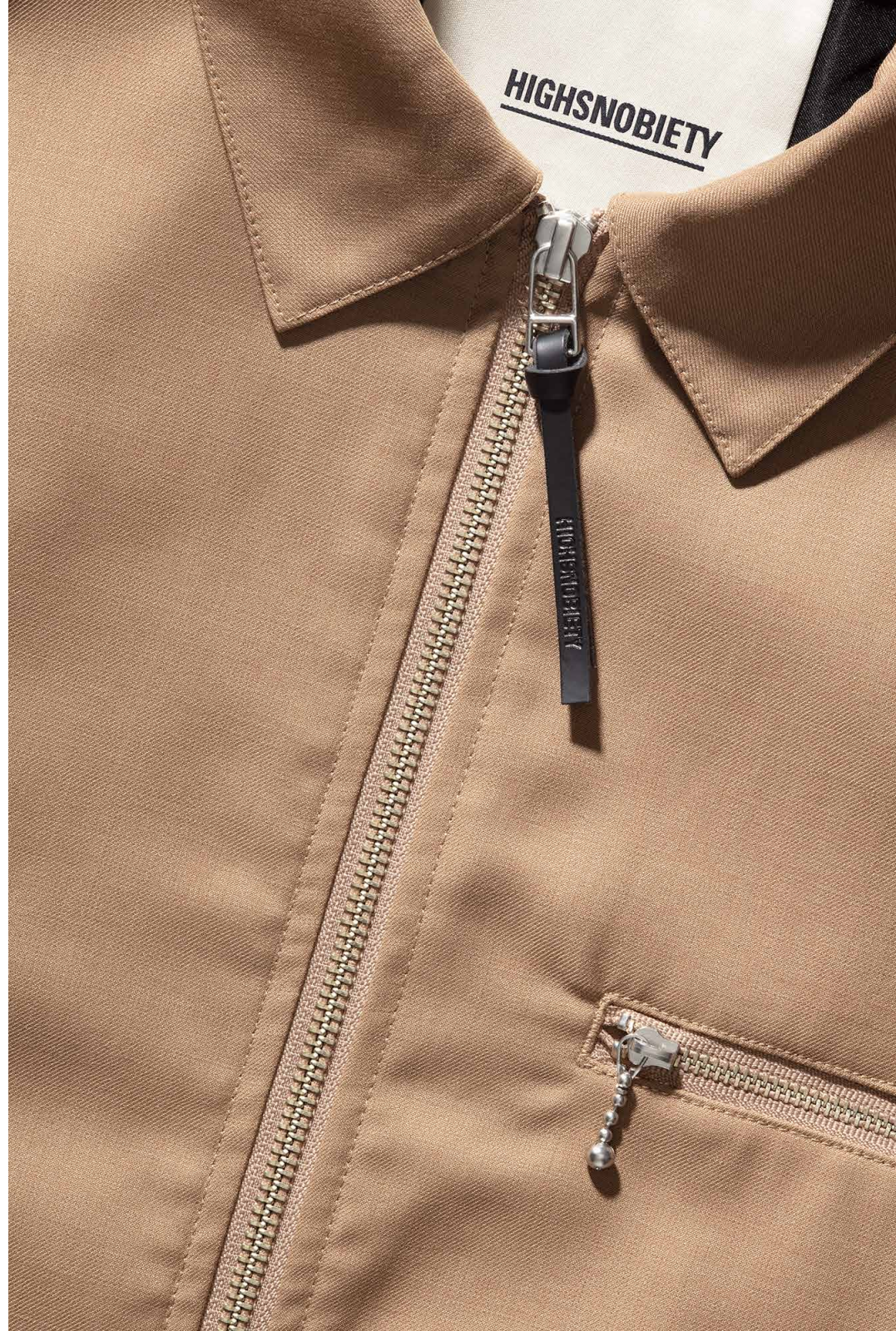
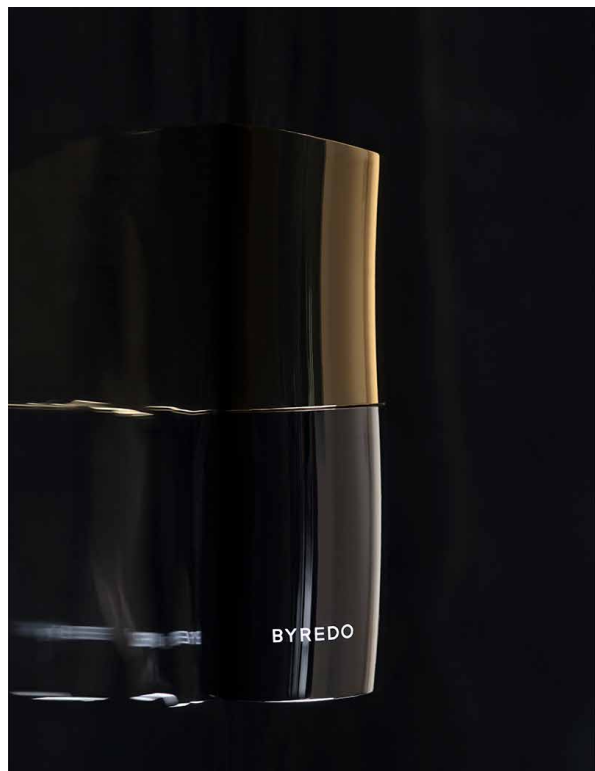
NUMÉRO, VOGUE,
HARPER'S BAZAAR,
L'OFFICIEL, BYREDO

ABOUT

DENIS KOVAL IS A BERLIN BASED STILL-LIFE PHOTOGRAPHER.
THE BANDWIDTH OF HIS WORK INCLUDES IDEATION, SET DESIGN, AND RETOUCH.

DENIS'S MASCULINE, ALMOST TECHY STYLE IS INFLUENCED BY HIS STRONG INTEREST AND BACKGROUND IN FASHION DESIGN. HIS INTRIGUING IMAGES ARE EXECUTED WITH BOTH PRECISION AND CALCULATION, YET LEAVE MUCH SPACE FOR EXPLORATION AND EXPERIMENTATION.

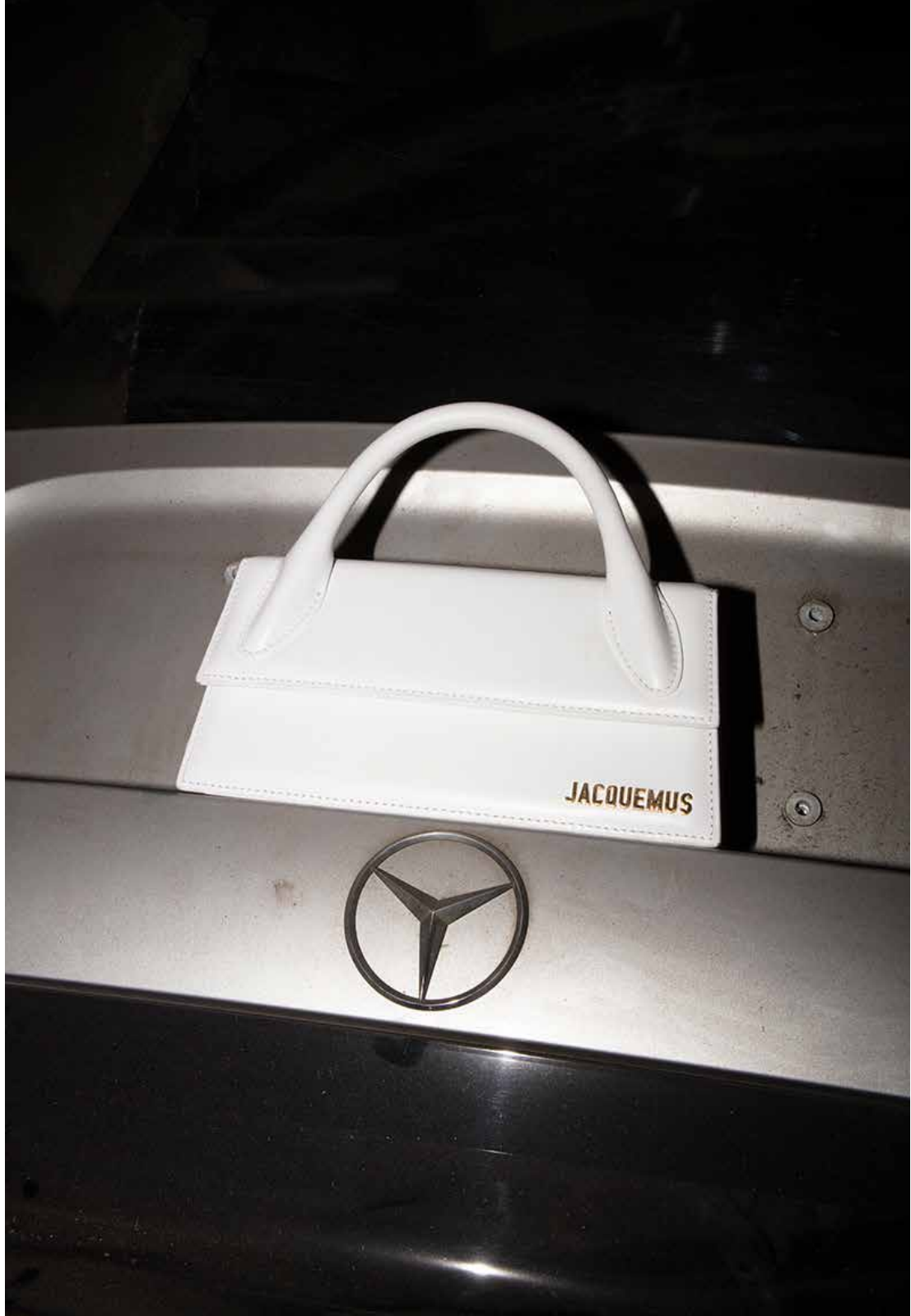
DENIS IS WORKING INTERNATIONALLY FOR CLIENTS SUCH AS ADIDAS, KLM, FILLING PIECES, ZALANDO, NUMÉRO, VOGUE, HARPER'S BAZAAR, L'OFFICIEL, AND MANY OTHERS.

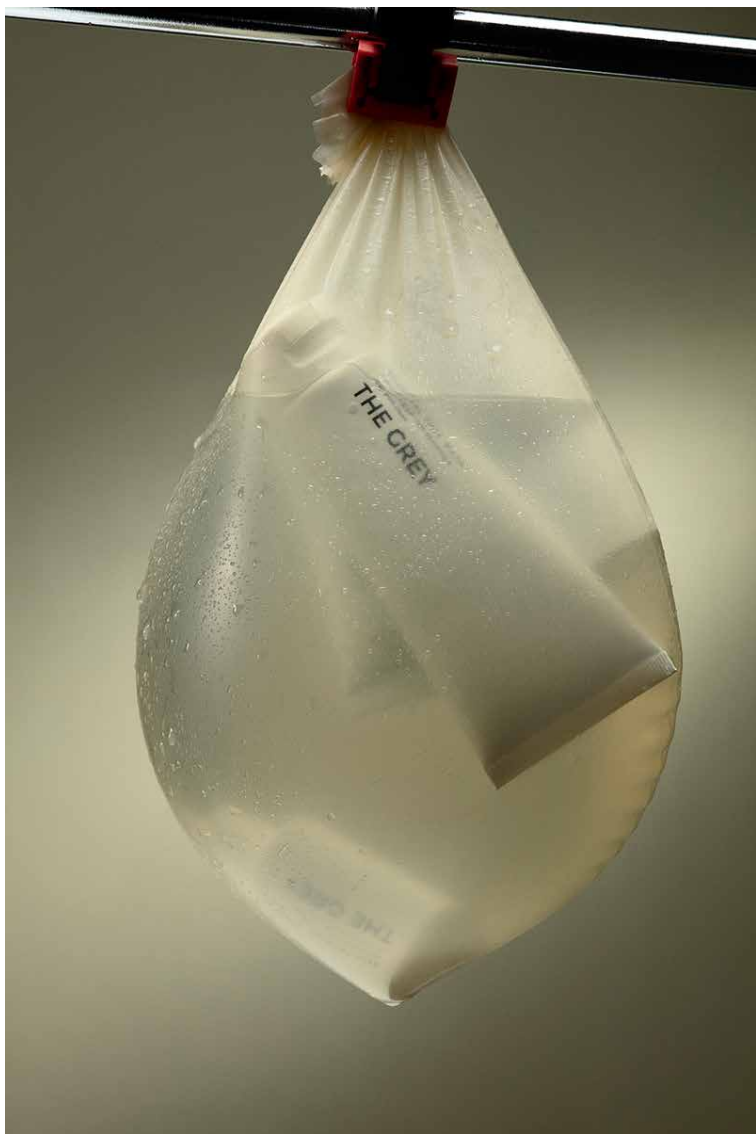




GIVENCHY

























ORPHEUS

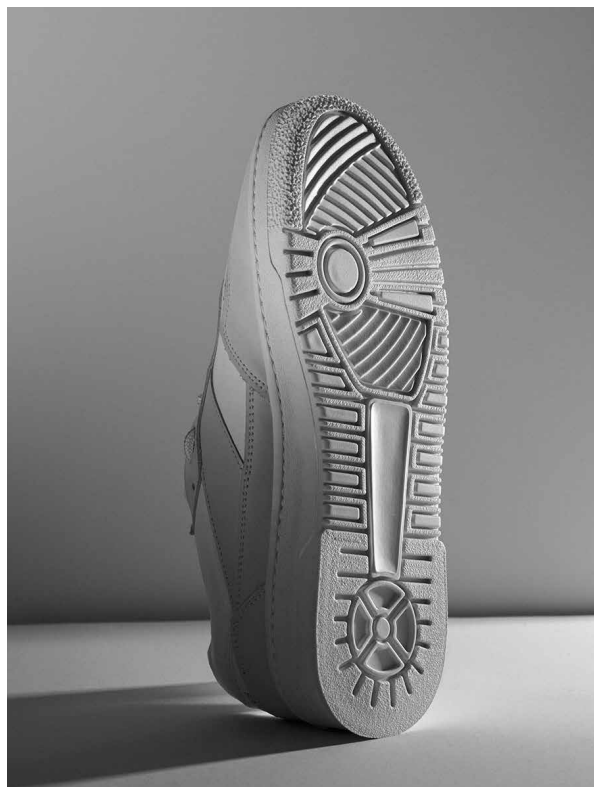


RESURRECTION
SERUM SLIP-CLEANSER

WITH YOUTH-RESTORING
ORPHEUS FLOWER CELL
PEPTIDE COMPLEX™

3.4 fl.oz (100 mL)







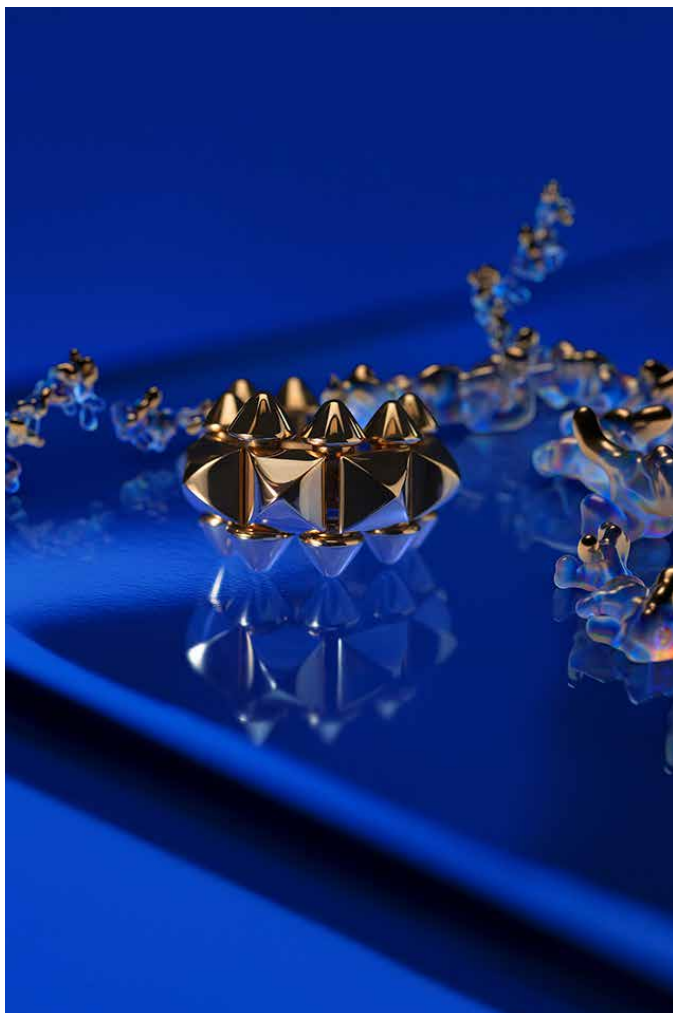












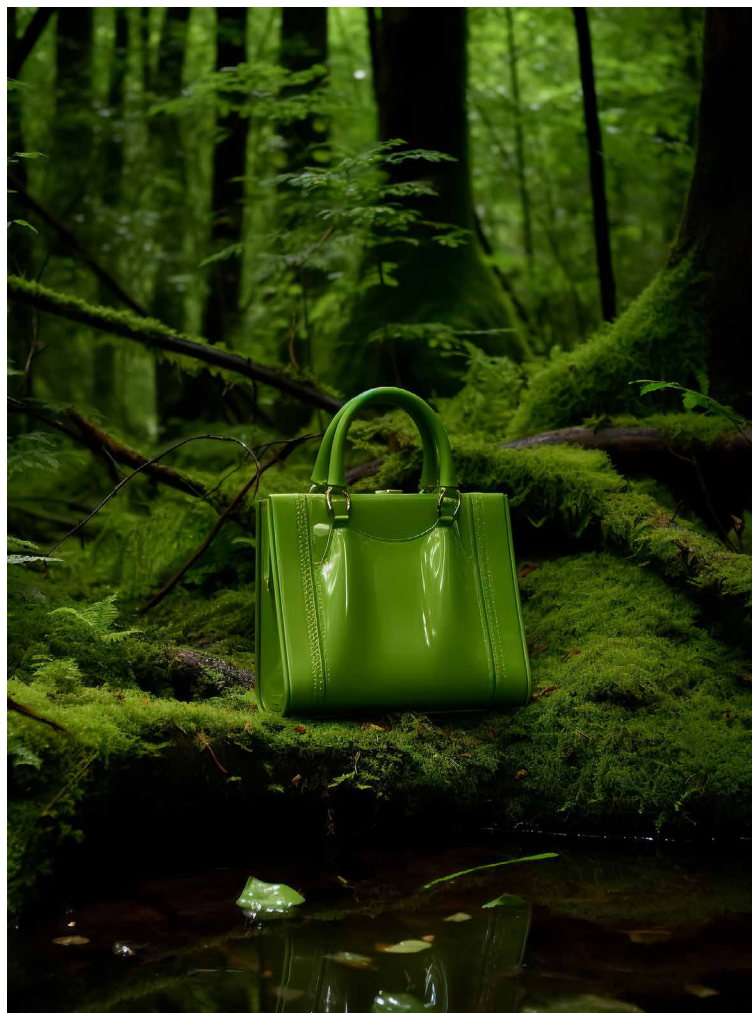












collectiveInterest

collectiveinterest artist management

Sredzkistraße 29, 10435 Berlin / lisa@collectiveinterest.de / +49 (0) 30 220 091 62

www.collectiveinterest.de